

# Ascend

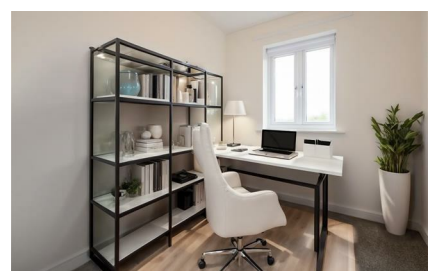
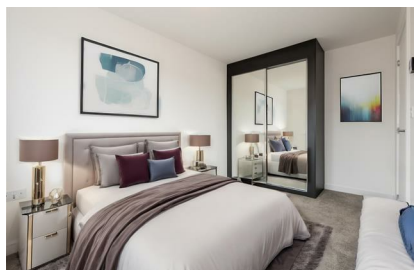
Built on higher standards



## 51 Stokers Drive Bolton BL6 5XB

- Brand new home
- Integrated dishwasher, fridge freezer & washing/drying machine
- Security alarm
- Private driveway or parking space
- Patio & Garden
- Fitted wardrobe to master bedroom
- Wood-effect flooring downstairs; carpet upstairs
- Pet friendly
- Blinds to the front of the property & all bedrooms

## £1,300 PCM



Nestled within the heart of Horwich, Barton Quarter introduces an enticing collection of 2 and 3-bedroom homes to rent.

Welcome to the Shoemaker – a beautifully finished three bedroom family home. Entering this property, you will find yourself in the hallway with the WC to one side. Further along you will enter the large living space on the ground floor, leading in to an open-plan kitchen/dining area. This light and airy space benefits from French doors leading to your private back garden.

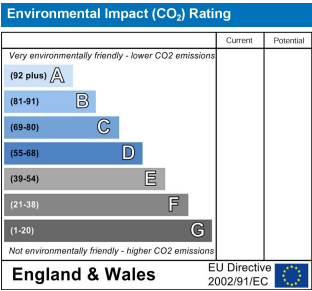
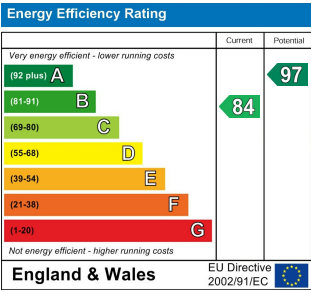
Upstairs, you will find a large main bedroom, along with two further bedrooms and a family bathroom.

With a history rooted in its former railway and mill town heritage, Horwich has gracefully transformed into a thriving and dynamic community. Barton Quarter is thoughtfully positioned to provide residents with easy access to fantastic local amenities, including the Middlebrook Retail Park, and a diverse array of shops and leisure options, such as the renowned Bolton Wanderers football club.

This appealing community caters to the needs of both local residents looking for a vibrant environment and commuters seeking seamless connections to nearby towns and cities like Bolton, Chorley, Manchester, and Preston.

Access the site by using postcode BL6 5UE

- Deposit £1500
- Unfurnished
- Council Tax B
- Available Now



# Ascend

Built on higher standards

0161 707 7584

192 Monton Road, Monton, Manchester, M30 9PY

monton.sales@ascendproperties.com,  
monton.lettings@ascendproperties.com  
www.ascendproperties.com



These particulars, whilst believed to be accurate are set out as a general outline only for guidance and do not constitute any part of an offer or contract. Intending purchasers should not rely on them as statements of representation of fact, but must satisfy themselves by inspection or otherwise as to their accuracy. No person in this firm's employment has the authority to make or give any representation or warranty in respect of the property

